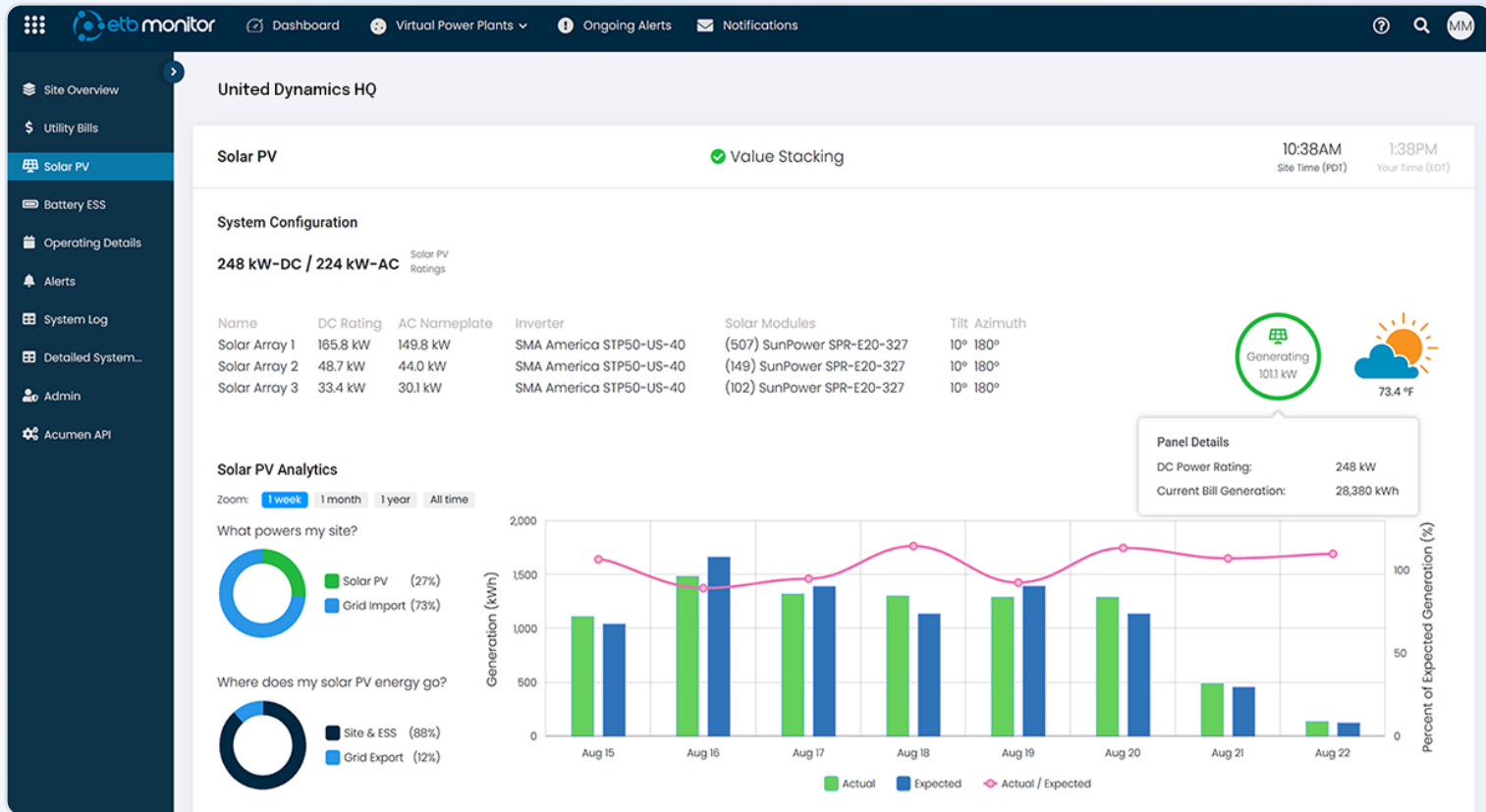


# ETB Monitor

**Complete Transparency of Your Solar Assets.**

A robust solar monitoring platform that's directly connected to your modeling software for an end-to-end software experience.



Visualize Actual vs Expected Solar Generation

Utility Bill Details

✕

Bill Date Range

Jul 1, 2023 - Aug 1, 2023

\$21,801

Total Savings

\$17,128

Savings From Solar

\$4,673

Savings From ESS

Charges & Savings

Charges & Savings (\$)	Other	NBC	Energy	Demand	Total
Charges:	\$226	\$2,267	\$23,889	\$5,468	\$31,849
Changes from Solar Pv:	—	-\$916	-\$16,185	-\$26	-\$17,128
Changes from Battery:	—	-\$40	-\$3,170	-\$1,464	-\$4,673
Final Bill:	\$226	\$1,310	\$4,534	\$3,978	\$10,048

Energy Usage

Energy Usage (kWh)	On Peak	Off Peak	Super Off Peak	Total
Original Energy Usage:	13,384	28,792	17,618	59,794
kWh Change from Solar PV:	-7,677	-26,628	-7,746	-42,051
kWh Change from Battery:	-4,326	+2,982	+2,231	+887
Final Energy Usage:	1,381	5,146	12,103	18,630

Demand

Demand (kW)	On Peak	Off Peak	Super Off Peak	NC/Max
Original Demand:	208	—	—	208
kW Change from Solar PV:	-1	—	—	-1
kW Change from Battery:	-117	—	—	-43
Final Demand:	90	—	—	164

See Detailed Electric Bill Costs & Savings

# Features & Functionality

## ✓ End-to-End Platform

End-to-end platform allowing you to quickly compare system performance to ETB Developer sales proposals.

## ✓ Trusted Bill Calculations

Savings analysis powered from the same ETB Developer savings engine and extensive database of 100,000+ rates.

## ✓ Integrated Proposals

Closeout proposals in ETB Developer and create sites within ETB Monitor using proposal data.

## ✓ Solar Monitoring

Compare actual solar generation to expected generation and see detailed electric bill savings.

# End-To-End Platform



## Model

Software platform for modeling and proposing the economics of solar projects. Complete a proposal, close your lead as won, and seamlessly connect your site to ETB Monitor.

Energy Toolbase is an industry-leading platform providing a comprehensive platform for modeling and monitoring solar projects, allowing developers to deploy and track projects efficiently and accurately.



## Monitor

Complete transparency into the real-time operation, performance, and savings of your solar projects. Compare analytics proposed in ETB Developer to real-time performance.

# Trusted Bill Calculations

etb developer

Dashboards

Leads

Proposals

Utility Rates

More

AG

Edit Energy Use Profile

Step 1

What type of energy usage data do you have?

Step 2

Enter Interval Data Info

Step 3

Enter Energy Use Profile Info

General Info

Utility Rate Details

\* Energy Use Profile Name

(Whitepaper Ready - 250 kW) Office

Interval Data Start Date

1/1/2018

Show True Up Details

Rate Details

AL-TOU

Utility: S004E

Effective Date: 6/1/2022

Connection Type: Secondary

Has CARE Discount: False

Inside SD City Limits: True

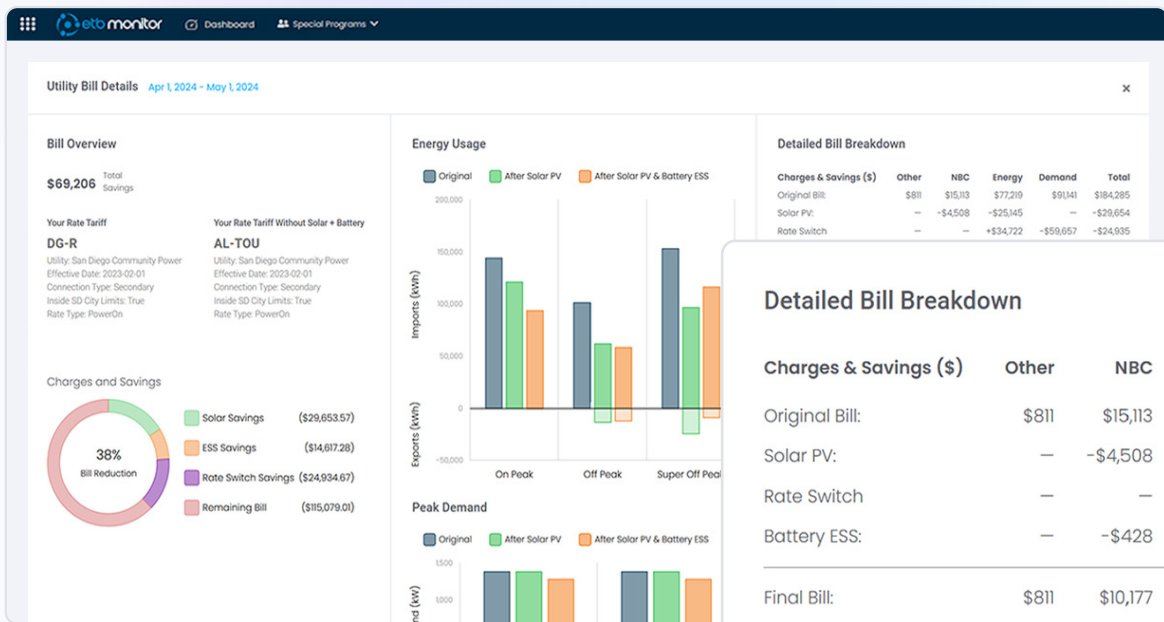
Show Rate Schedule Details

Bill Date Ranges			Net Energy Use (kWh)			Max Demand (kW)		
Start Date	End Date	Season	On Peak	Off Peak	Super Off Peak	NC / Max	On Peak	Other
1/1/2018	2/1/2018	W1	9,216	28,573	10,597	184	123	\$211
2/1/2018	3/1/2018	W1	7,449	23,430	8,087	175	127	\$211
3/1/2018	4/1/2018	W2	8,871	17,421	18,995	137	127	\$211
4/1/2018	5/1/2018	W2	9,360	17,604	20,060	160	156	\$211
5/1/2018	6/1/2018	W3	10,126	32,185	10,692	203	170	\$211
6/1/2018	7/1/2018	S1	10,869	31,140	11,584	217	217	\$211
7/1/2018	8/1/2018	S1	12,715	30,875	12,374	208	208	\$211
8/1/2018	9/1/2018	S1	12,456	33,425	12,964	217	217	\$211
9/1/2018	10/1/2018	S1	10,945	30,374	14,854	250	250	\$211
10/1/2018	11/1/2018	S1	9,599	25,567	11,486	175	142	\$211

Charges After PV/ESS (\$)				
Other	NBC	Energy	Demand	Total
\$211	\$789	\$2,204	\$4,866	\$8,071
\$211	\$509	\$1,010	\$3,925	\$5,654
\$211	\$471	\$476	\$2,891	\$4,049
\$211	\$440	\$62	\$2,820	\$3,532
\$211	\$570	\$546	\$3,612	\$4,939
\$211	\$529	\$787	\$4,370	\$5,896
\$211	\$560	\$776	\$4,472	\$6,020



View a precise breakdown of utility rate charge types (e.g. energy, demand, NBC's, other) based on your customer's rate tariff.



### Detailed Bill Breakdown

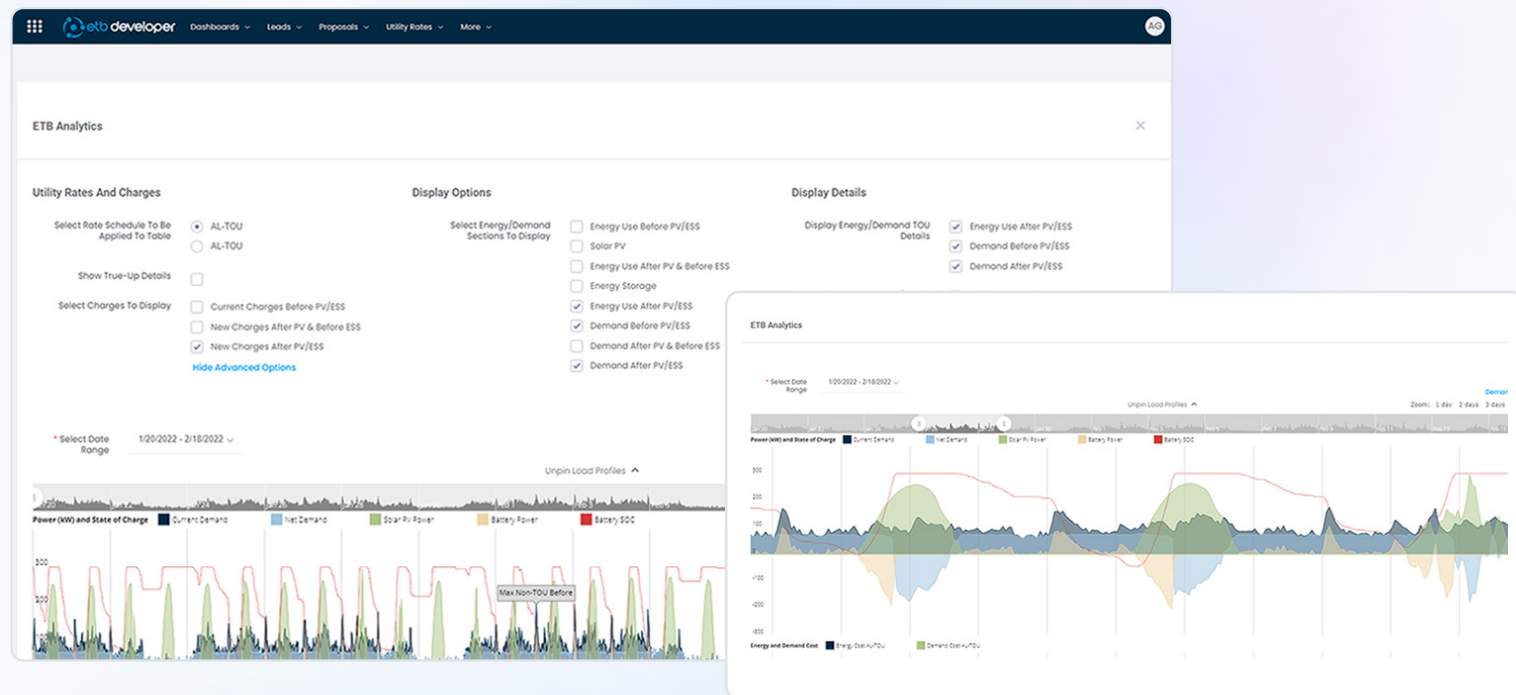
Charges & Savings (\$)	Other	NBC	Energy	Demand	Total
Original Bill:	\$811	\$15,113	\$77,219	\$91,141	\$184,285
Solar PV:	—	-\$4,508	-\$25,145	—	-\$29,654
Rate Switch	—	—	+\$34,722	-\$59,657	-\$24,935
Battery ESS:	—	-\$428	-\$11,848	-\$2,341	-\$14,617
Final Bill:	\$811	\$10,177	\$74,949	\$29,143	\$115,079



View a transparent breakdown of avoided cost of your operational solar systems in the field for each billing period.

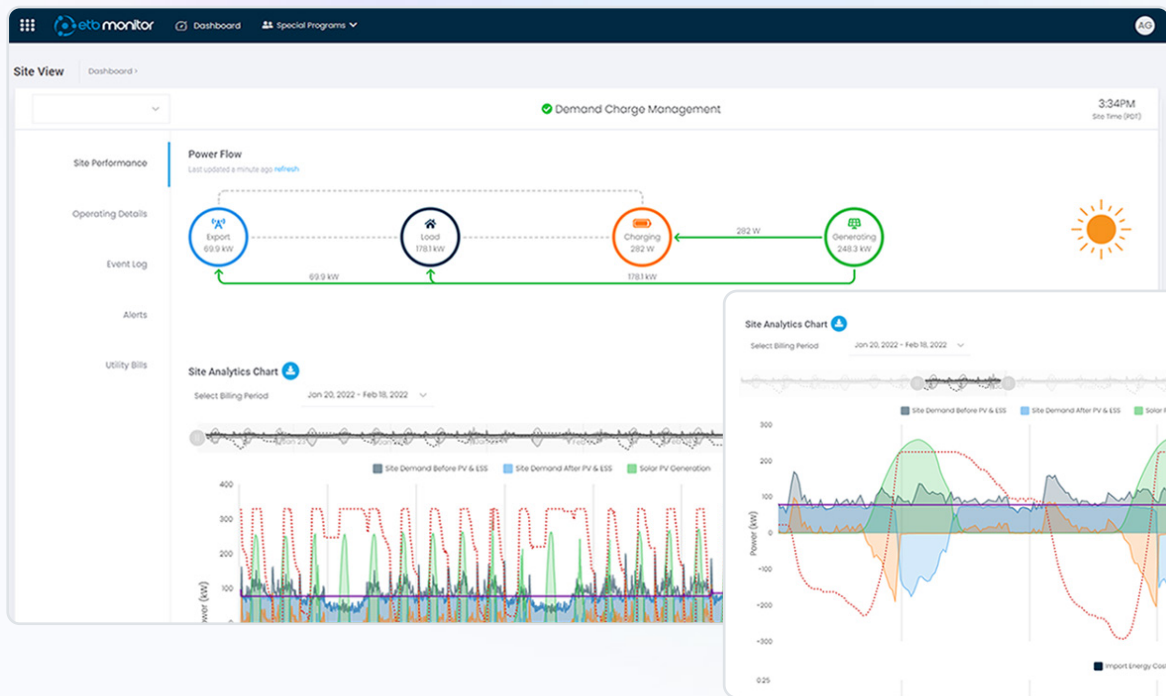


# Integrated Proposals



Visualize interval meter data (e.g. site load, PV production, ESS dispatch) during the sales & modeling process to precisely quantify cost & bill savings.





Transparently view site metered data via our visualization tool to understand system performance & validate the quantified avoided cost of operational systems.

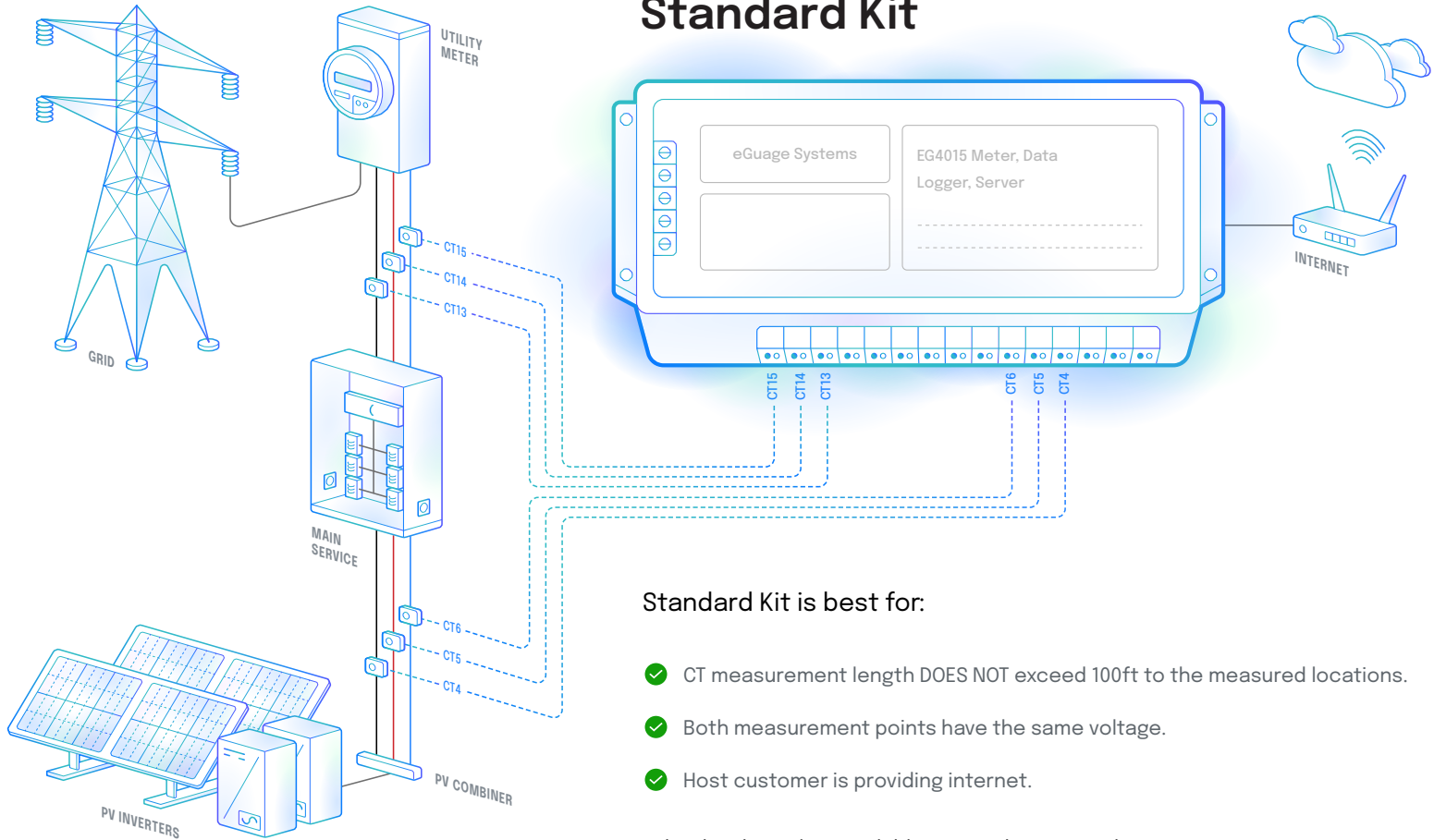
# Solar Monitoring Pricing

## Example of ETB Monitor Pricing:

Perpetual License <small>No \$/kW Fee</small>	\$1,000
5-Year ETB Monitor Subscription	\$2,340
Hardware: Standard Kit*	\$2,003
<b>All in Cost</b>	<b>\$5,343</b>

\*Hardware costs can vary. Additional CTs, metering, and LTE adder available if needed.

# Standard Kit



Other hardware kits available to match your needs upon request.



**Get started today!**

Want better visibility into your solar and storage system performance? Scan to discover ETB Monitor.

[www.energytoolbase.com](http://www.energytoolbase.com)  
(866) 303-7786